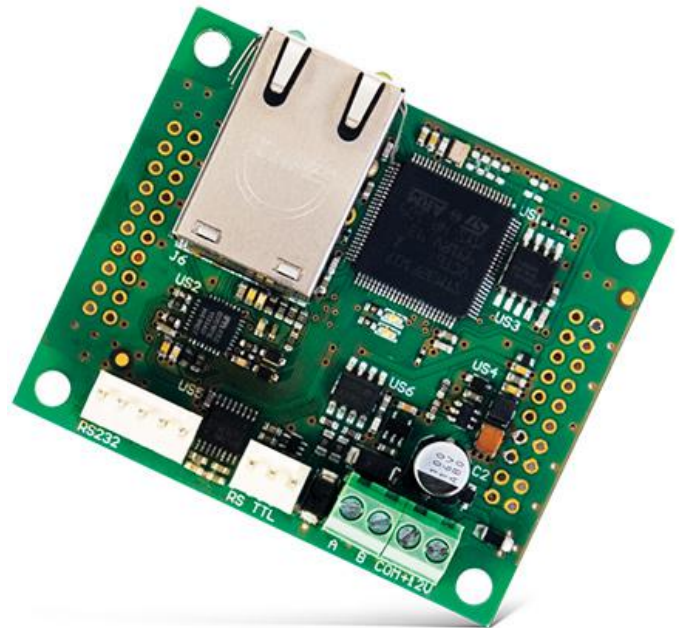


CSP-ETH

COMMUNICATION WITH A VIRTUAL PANEL MODULE

The server module of the virtual panel is designed to remotely monitor the status of a fire alarm system which uses the **CSP-100** and **CSP-200** series control panels. The module can verify the status of a CSP fire alarm system from any location around the world, by means of a computer equipped with an internet browser. This solution facilitates, among others, remote diagnostics of the system for the system maintenance team.

- cooperates with **CSP-200** and **CSP-100** series control panels and **PSP-100** and **PSP-200** series remote control panels
- automatic IP configuration by means of DHCP
- powered directly by the control panels
- the module has been issued a European CPD construction certificate for control panels **CSP-104**, **CSP-108**, **CSP-204**, **CSP-208** and a domestic construction certificate mark B



TECHNICAL DATA

Board dimensions	60 x 50 mm
Operating temperature range	-5...+40 °C
Max. current consumption	45 mA
Weight	24 g
Maximum humidity	93±3%
Transit temperature range	-25...+55 °C

