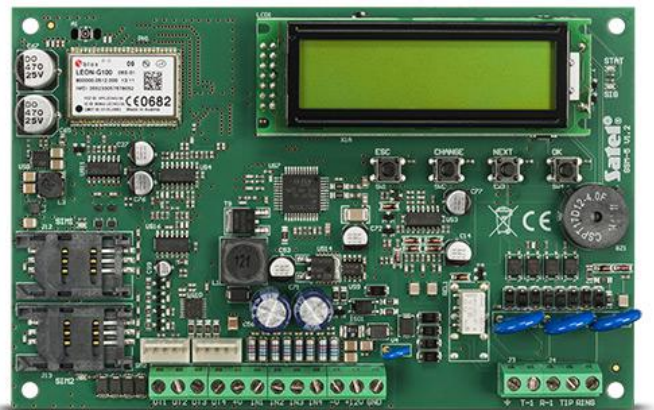


# GSM-5

## COMMUNICATION MODULE

The purpose of the **GSM-5** communication module is to provide a GSM backup communication path in the case of a traditional telephone line failure. Its dual SIM card support improves the reliability of GSM connectivity by means of independence from one telecom operator infrastructure. The **GSM-5** can carry voice messaging and SMS messaging as well as conduct monitoring with the use of GPRS technology.

- GSM backup for telephone line
- support for two SIM cards
- telephone line supervision with automatic switching to GSM
- 4 programmable inputs
- telephone reporting conversion to SMS/GPRS/CSD
- 3 outputs for DTMF/SMS/CLIP remote control
- pager (DTMF) to SMS conversion
- CLIP test transmissions
- modem feature for **INTEGRA** panels unit configuration with buttons or PC



### TECHNICAL DATA

Number of OC outputs	3
Supply voltage	12 V DC
Outputs rating	50 mA
Number of inputs (zones)	4
Board dimensions	162 x 104 mm
Operating temperature range	-10...+55 °C
Standby mode current consumption	100 mA
Max. current consumption	330 mA
Required output current, AC	500 mA
Maximum humidity	93±3%
Environmental class according to EN50130-5	II
Number of outputs power	1
Device + housing weight	875 g
Current-carrying capacity, +V output	300 mA